

# Mastiff Series

## SWING GATE OPENERS

### Mastiff 300

For up to 300kg/3m per gate leaf.



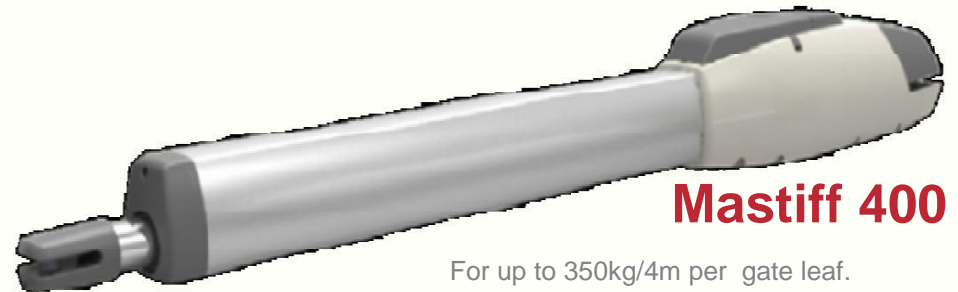
24Vdc Low Voltage Heavy Duty Electromechanical gear motor provides safety installation and powerful operation.



Easy manual release operating from the top by means of a personalized key



Built-in Limit Switch device for intelligent stop in opening and closing



### Mastiff 400

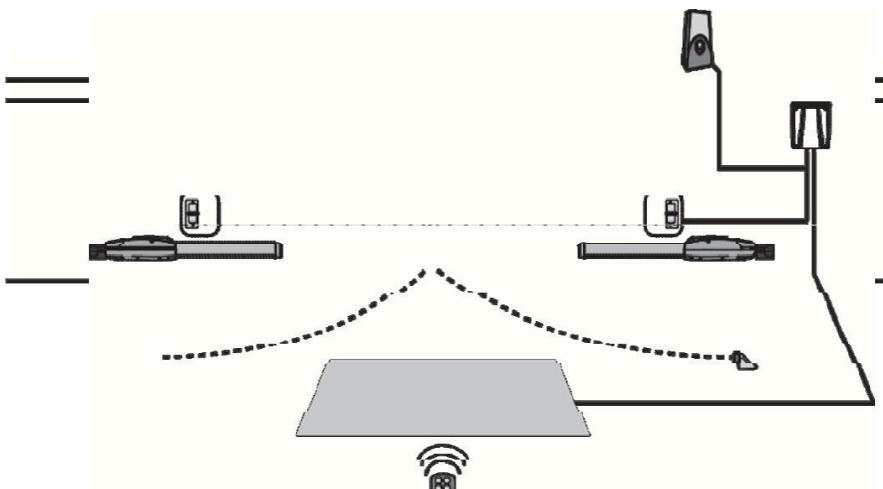
For up to 350kg/4m per gate leaf.

#### Technical Features

	Mastiff 300	Mastiff 400
Power supply	230 Vac (50 ~ 60 Hz)	230 Vac (50 ~ 60 Hz)
Motor Power supply	24 Vdc	24 Vdc
Max. gate weight	300 kg	350 kg
Max. gate Length	3m	4 m
Peak Thrust	3000 N	3500 N
Operation Stroke	350 mm	350 mm
Piston extension / retraction speed	25.5±2mm/sec	
Typical gate opening time	<14 sec	<14 sec
Duty cycle	20 %	20%
Protection grade (IP)	IP44	IP44
Working Temperature	-20°C ~ 50°C	-20°C ~ 50°C

#### Features:

- Die-cast aluminum motor cover provide great resistance to critical environment
- Copper worm gear is optional for extremely heavy duty application
- Obstacle detection and crush prevention
- Easy and Fast set up of installation
- A personalized key is used for manual release device with elegant and water proof cover design
- Opening up to 120° for most circumstances
- Single or dual gate install optional
- Back-Up battery optional
- Encoder movement control
- Built-in Limit Switch device is optional for advance application
- Pedestrian mode
- In accordance with EN61000-6-1:2007



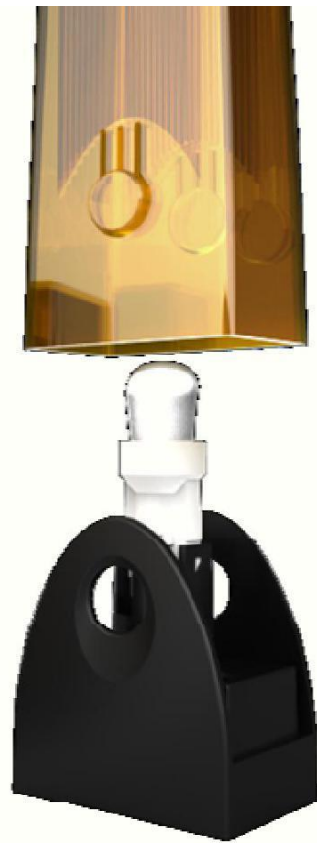
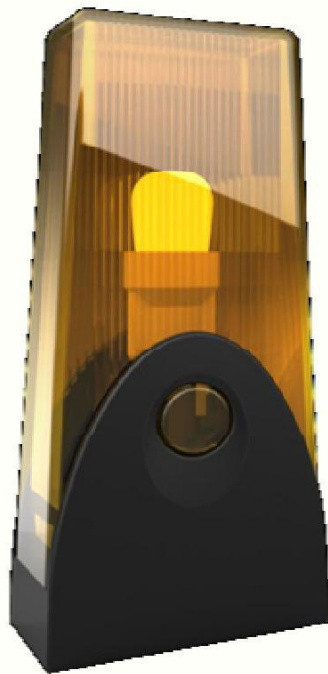
Encoder Technology  
Intelligent calculate

Inner Stroke  
ø18mm stainless worm shaft with  
high durability

The above graph represented installation included Dual motor Control System Photocell

of motor operating distance  
give soft starting and closing

Flashing Light and transmitters. Terrier swing gate operator is qualified by EN 61000-6-1: 2007.



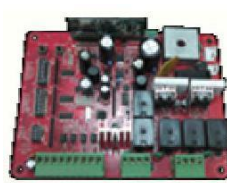
## Accessories



### CB Series Control System

Smart control with intelligent functions

- Power input 110AV/230AV are available for optional
- Two back-up batteries support for power failure
- Build-in radio receiver for matching transmitters
- Over-current design for European safety regulation
- Elegant design and easy step installation
- Coordinate with CB16/CB20



### CB17 CB20

Economic Version Advance Version

with Encoder Technology



### TM2 Transmitter

2-Channel Transmitter

- Two-channel transmitter with programmed features
- Up to 50m transmitting distance
- With rolling code of 433MHz



### TM3 Transmitter

4-Channel Remote

- Four-channel transmitter with programmed features
- Up to 50m transmitting distance
- With rolling code of 433MHz



### RB1 Receiver Box

External Receiver System

- Coordinate up to 200 transmitters
- Rolling code 433MHz receiver box
- AC/DC 12-24C application



### FL2 Flashing Light

Flashing Light powered with 24Vdc

- Unique inner-shape design for maximum light efficiency
- Halogen bulb usage provide excellent illumination
- Vertical and Horizontal install are available

### PS1 Metal Stopper

Metal Stopper with rubber impact reduce

- 100% metal material with great durability
- Impact reduce rubber keep silence movement

### H2 Photocell

Photocell of receiver/transmitter

- Safety device for up to 30m application
- Power input of AC/DC 12 ~ 24V
- Waterproof resistance design for outdoor environment

**Contact Us:** THIEN DUC INTERIOR AND CONSTRUCTION CO., LTD.

Address: 352 Giai Phong Road, Thanh Xuan District, Hanoi City, Vietnam

Tel: +84-4-36687088 Fax: +84-4-36687086 **Hotline: 0932 238 255**

Email : [automaticvn01@gmail.com](mailto:automaticvn01@gmail.com) <http://www.automaticvn.com>